

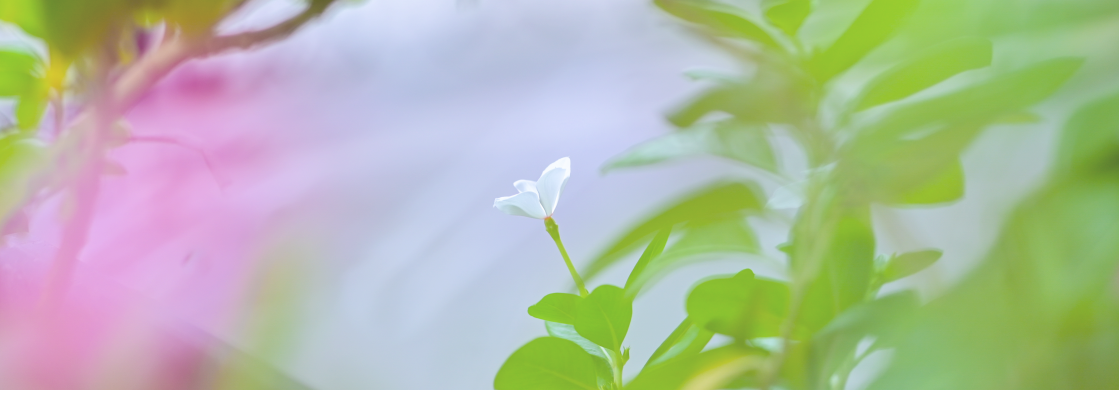
GEM *LINK*

FOR INTERNAL CIRCULATION ONLY

ISSUE I / 2021

Every Woman
CAN
LAUGH
at her
FUTURE





CONTENT

GEM LINK - ISSUE I / 2021

- 1 Keynote
- 2 Announcement & Acts of Kindness
- 3 Event Highlights :
Zoom Roundtable 'HiTea'
- 4 - 5 Graduation Highlights
- 6 - 7 Programme Highlights
- 8 Welcome New Staff Onboard

Dear friends and donors,

Life was never the same when the COVID-19 global pandemic hits worldwide resulting in economic downturn and social instability. For small charities like GEM, we were not spared from the effects of the pandemic. Donations plunged and we had to cancel 2 fund-raising events due to circuit breaker measures and restrictions on gatherings. We had to switch to virtual fund-raising and initiated a campaign 'Be the Catalyst for Changed Lives' with GIVE.asia in order to call for donations and create awareness of our needs. At the same time, we are also competing with many other charities for the same piece of cake, amongst other needful campaigns to aid families who were drastically affected by COVID-19.

Thanks to our faithful supporters who responded swiftly to our urgent appeal that we are able to sustain till today. Please help to share our needs to your social network to continue to help support this transformation work among the young WINners who will one day pay forward to positively impact their families. For ways to donate, please check us out at our newly revamped website www.gemnsc.com

As we enter into 2021 with uncertainty, we are set to continue providing residential home care and journey with them to ensure their smooth transition back to the community and families. It has not been a bed of roses working with female young offenders as there are multi-level of needs to work on. However, we are committed to help them to build prosocial support as we believe that this is a critical factor to ensure a higher rate of successful reintegration.

If you are keen to invest socially in these young lives, please email us at: admin@gemnsc.com

Doreen Lim
Manager



ANNOUNCEMENTS

1. GEM New Start Centre Limited is awarded with one year IPC status from 6 November 2020 to 5 November 2021.
2. GEM is one of the participating beneficiaries onboard the newly launched e-platform 'Donate for Change', a micro donation service which encourages givers to donate as little as \$1 per month. To find out more, go to <https://donateforchange.sg/>

ACTS OF KINDNESS

Compassion spreads and knows no boundaries even with the social distancing measures that were put in place to keep the virus at bay. Following are the life-giving list we received during this period.

1. Personal Protection Equipment (PPE)

- We received a total of 220pcs of disposable masks, 11 reusable masks and 720ml hand sanitisers donated by National Council of Social Services & Ministry of Social Family Development.
- 48 bottles of multipurpose detergents and hand soap donated by Syntech Chemicals Pte Ltd.



2. Laptops

Urgent appeal for laptops for the WINners' training purposes was met and we managed to purchase 3 laptops with the donations raised.



3. Blessing and Treat

A group of warm-hearted individuals from a private residential estate collectively donated bags of clothes, board games, kitchenware and knicks knacks to bless the WINners. The WINners too were blessed with a traditional Christmas treat hosted by Rabbit Carrot Gun on 25 December 2020.



As a token of appreciation, the Winners presented a vase with a hand-drawn pit bull to the owner of 'Rabbit Carrot Gun'

EVENT HIGHLIGHTS

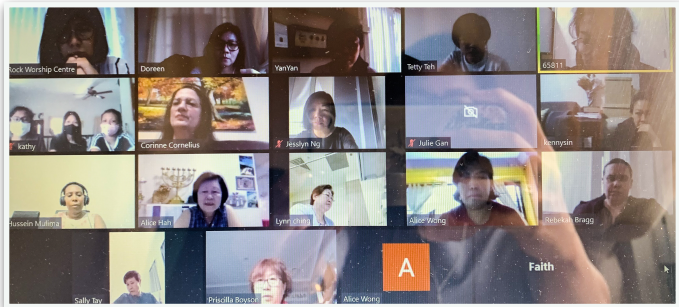
ZOOM ROUNDTABLE 'HITEA'

It has always been part of GEM's mission to encourage women to rise up to their full potential and purpose. We seek to do this through hosting high tea gatherings where we bring together women for a time of connection and empowerment.

The Covid-19 pandemic has made it not possible for us to physically host our high tea this year. Yet, it is during such time that many are needing to hear a word of encouragement and hope. There has never been such a time when humanity is threatened with much fear and becomes so helpless when the pandemic hits early this year. Many people lost their loved ones, jobs and health. There are also many who are locked at home, others who are working to help and prevent the virus, all needing the reassurance and the hope that "we shall overcome this."

Thanks to technology these days that we were able to host a virtual *roundtable* session on 28 November, on a Saturday afternoon where women can still get together to share and connect. And what's more powerful about hosting such gathering online was that we were able to even connect with women across the globe; we had a few from Australia and even one from New Zealand! Our founder, Mrs Lilian Tng, who is also based overseas in Sydney shared words of encouragement to the ladies. Being able to connect together in such a manner is in itself empowering, knowing that we are all in this together and will also be able to rise up stronger together through the challenging times.

Together, we stay strong and united!



GRADUATION HIGHLIGHTS

We celebrate and rejoice with 3 WINners who had successfully completed their 6, 9 and 12 months stay-in program respectively in 2020.



WINner Sue*, 21 years old - Graduated on 18th November 2020

"I never imagine that I will be able to proudly claim to have my very own 'signature' dish. I regard GEM as my own home and I have made friends here. I have learnt many things and I hope to apply them in my life after I leave GEM."

Sue, who has a low cognitive ability suffers from poor self-esteem and anger management issues. Though she is unlike the usual clientele that GEM reach out to, we decided to give her a chance to experience the safe and nurturing environment our Home provides. From the time of her admission, she had difficulty managing her negative emotions and would have emotional outburst almost weekly. With the help of the staff's patient mentoring, she made significant-improvement and learnt to better regulate her emotions.

In GEM, learning to cook is one of the essential life skills we want the Winners to learn. Sue was fearful of igniting the flame on the stove at first. In order to help her overcome her fears, she was first assigned to help out with food preparation before we

gradually encourage her to go near the stove by guiding her hands to hold the ladle when stir frying the dish. Eventually, she overcame the fear of fire and was proud that her signature dish – fried potato omelette was well-liked by everyone. To many, it may not be a great achievement to be proud of but not for Sue, whose desire is to be able to cook for her family after she completes her supervision order. During those 6 months, WINner Sue had her trying moments when she felt like calling it quit but eventually, she pressed on.

We are proud that she was able to make it!



WINner Fanny*, 19 years old - Graduated on 25th February 2020

"I am glad that GEM didn't give up on me as I have broken the rules numerous times. I want to thank all the staff who have always been there to support me and I want to take this time to apologise for all my wrongdoings during this period. Thank you for making it possible for me to graduate from GEM."

GRADUATION HIGHLIGHTS

We celebrate and rejoice with 3 WINners who had successfully completed their 6, 9 and 12 months stay-in program respectively in 2020.



WINner Nelly*, 20 years old - Graduated on 7th August 2020

"I was placed on probation order to stay at WINners' Home for 9 months. During this period of time, I likened myself to being a knife that needed to be polished and sharpened. One thing that I treasure here is getting good advice from the staff. However there were bad times when I fought with the staff and this is not something that I am proud of. Despite my poor attitude, they still give me chances to work on myself.

I like the change in me now. The old me was defensive by nature and saw feedbacks as personal attacks, and my reaction was to retaliate. Now, I am open to feedbacks and will do a self-check to see what are the areas that I can improve on. I have also mellowed down and am better at managing my anger. I am a prideful person and for me to admit that I am wrong is hard but GEM has helped me to see the

STORY OF TRANSFORMATION

"I have been in GEM for 6 months. It has been an interesting journey because GEM is not the usual hostel; GEM is into independent living and helping individuals to be more mature in making life decisions. While they entrust us with our own decision making, they continue to guide us along the way to make sure that we get the support we need."

"The programme helps me to identify self-values and to develop and expand more on building up my good attributes. In addition, I learned about team building, which is an area that I am weak in. GEM is a good place as it really helps me to be a better individual and ensure that I have a better future."

WINner Adele*, 20 years old

****Names are changed to protect their identities***

WELCOME NEW STAFF ON BOARD

My journey in GEM started with a recommendation from a pastor who was mentoring me.

When I was introduced to GEM, the first thought that came to me was, Will I be able to handle the youths well? And another question that came to me was, Will I survive the work schedule? From a freelancer with my own time and my own target to a 9-5 schedule?

The most valuable lessons I had picked up in GEM are Trust, Faith and Love.

Trust: I was entrusted by my boss and colleagues to run a program even on the first day at work. Being a reserved and quiet person; it was a huge challenge for me to step out of my comfort zone to interact with the WINners and the staff. Most of the time I was clueless about what to do, but through the encouragement and help from my boss and colleagues I managed to take one step at a time to be a better me.

Faith: On the first day of work, while observing a staff conducting the program, the first thought that came to me was that handling the Winners requires more than just head knowledge. There are no set formulas or guidelines; but to really make time to understand and connect with them.

Love: In GEM I learned to be patient, not judging, not resentful, not self-seeking, not doing things according to my way and not giving up especially on the WINners. At the same time I am able to make friends with them.

'Working in GEM is not just an ordinary work but it is also an opportunity for me to learn how to serve people with a big heart with no expectation for anything in return.'

Tetty M. Teh



BE A LIFE CHANGING DONOR

Receive 250% tax deduction for your donations

If you would like to make a donation to GEM works, please make cheque payable to:

"GEM New Start Centre Limited"

OR

donate online via

Giving.sg / Give.asia



PayNow



Participating banks: DBS/POSB, OCBC, Citibank, UOB, HSBC, Standard Chartered Bank, Maybank, ICBC, Bank of China



GEMNewstart



admin@gemnsc.com



New Start Centre Limited



2, Springleaf View
Singapore 787908



www.gemnsc.com



(65) 6266 3302 / 6266 3310